

Laminars + Leapers

ELECTRIC LEAPER SERIES



Electric Leaper Series
pg. 92

WMV SERIES: STARBURST LAMINAR



WMV Series
Starburst Laminar
pg. 95

Distributor:

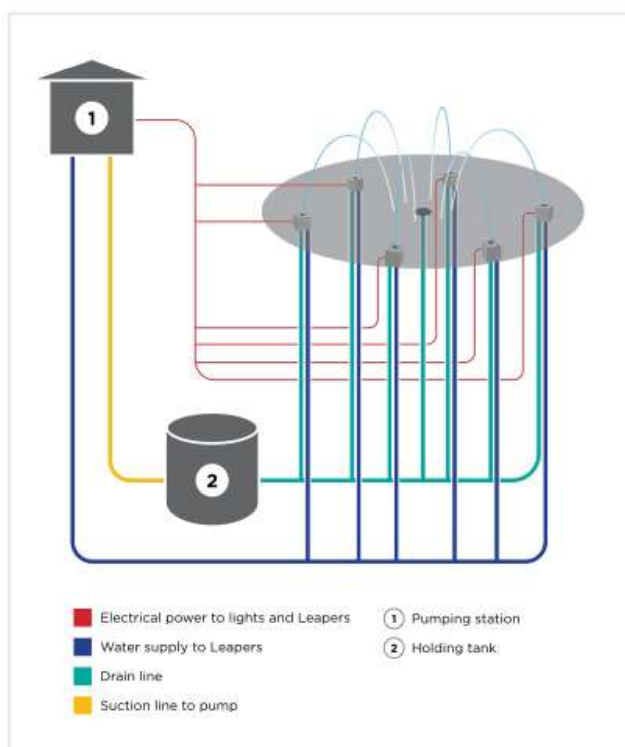
Miracle

www.miracleeng.com.hk

crystalfountains.com

Leaper/Laminar Fountains

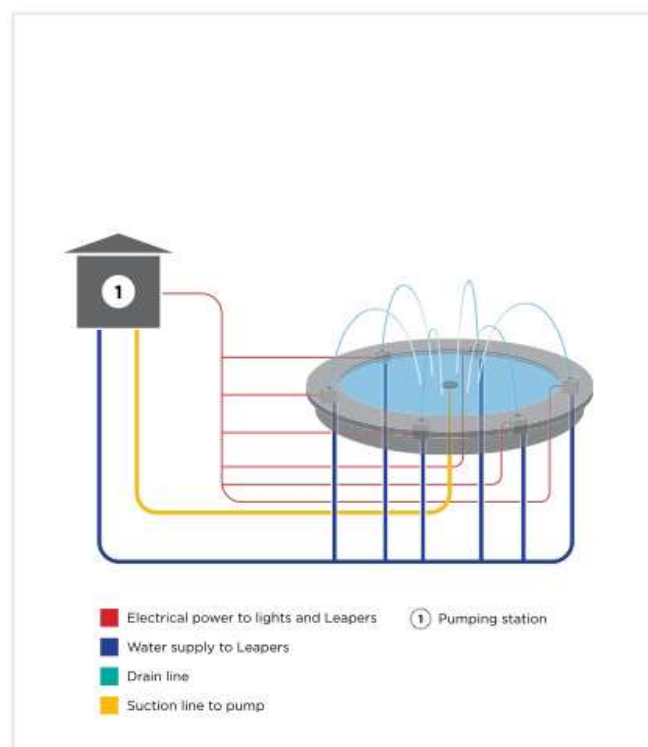
Provide endless entertainment and fascination



TYPICAL INSTALLATION FOR PLAYDECK

- » Nozzles are niche-mounted in a deck surround
- » Water drains through the surround into a holding tank
- » Water then pumped to nozzles via a pumping station*
- » Controllers and sequencing devices make the play experience much more fun.

*NOTE: Water quality needs to be strictly monitored for public safety.



TYPICAL INSTALLATION FOR FOUNTAIN

- » Nozzles are placed in fountain wall
- » Water is pumped to nozzles via pumping station*
- » Controllers and sequencing devices make the fountain more entertaining for all audiences.

Distributor:

Miracle

www.miracleeng.com.hk

crystalfountains.com

Leaper Series

with Fiberoptic or RGBW LED Lighting



Crystal's Electric Leaper produces a 13mm diameter glass-like water rod that creates jumping and leaping effects:

- » Available with three different lighting options
 - RGBW LED, unlit, or with Fiberoptics
- » Versatile
- » 12VDC Diverter mechanism can switch on/off in ranges from .05 seconds to unlimited
- » Multiple Leapers produce a wide variety of patterns
- » Produce multiple heights using a variable speed drive pump
- » Can be installed out of water or submerged to maximum water level shown
- » Available with niche or stand-alone

Easy Installation

- » Has up to 50° installation adjustment built-in
- » 3 cable lengths to choose from

Programmable

- » Program water speeds and lengths to create visual interest and entertainment*

Lighting

- » Achieve dynamic color cost-effectively with fiberoptic connections
- » Achieve greater programming versatility with RGBW LED lighting that can be individually programmed for unlimited lighting shows including pure white
- » Made of high-density polyethylene, polycarbonate ABS with UV protection and 304/316 stainless steel with 26mm male n.p.t.
- » Solenoid activated via 12VDC
- » Water level independent**
- » CE marking, IP68, submersible rated

*For interactive play do not exceed 6 meters per second.

**A filtered water supply is required (cartridge filter or 50 micron max.)

VISIBILITY	● ● ● ● ●
SOUND LEVEL	● ● ● ● ●
WIND RESISTANCE	● ● ● ● ●
SPLASH/MIST	● ● ● ● ●
EFFICIENCY	● ● ● ● ●

Distributor:

Miracle

www.miracleeng.com.hk

crystalfountains.com

Contact Crystal for detailed specifications, installation and operation details.

Leaper Series

with Fiberoptic or RGBW LED Lighting

WHICH LEAPER DO I NEED?

1
CHOOSE LIGHTING EFFECT

No Light or Fiberoptic Lighting

RGBW LED Lighting

2
CHOOSE MOUNTING TYPE

Free Standing Leaper

Niched Leaper

Free Standing Leaper

Niched Leaper

3
CHOOSE PART NUMBER

SWV100

SWV102

LED147

LED149

4
CHOOSE CABLE

CABLE	LENGTH	PART NUMBER
SWV100, No Light/ Fiberoptic	3m	ELCORD100A105
	6m	ELCORD100A106
	18m	ELCORD100A107
SWV102	Power Cable and LED Cable included	

CABLE	LENGTH	PART NUMBER
LED147, (Power Cable and LED Cable Kit)	3m	ELCORD203M
	6m	EL CORD204M
	18m	EL CORD205M
LED149	Power Cable and LED Cable included	

*Note: To turn SWV100 or SWV102 into Fiberoptic version a Fiberoptic Illuminator and Fiberoptic Cable must be purchased.

Distributor:

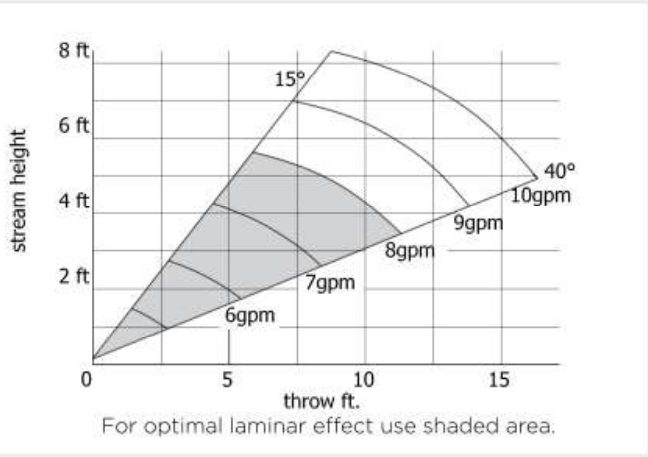
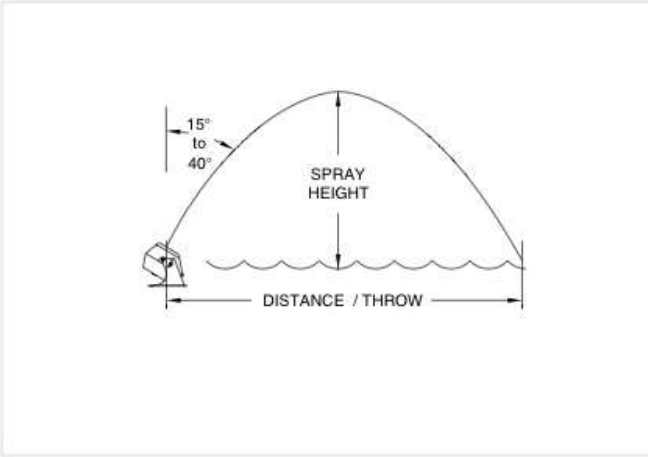
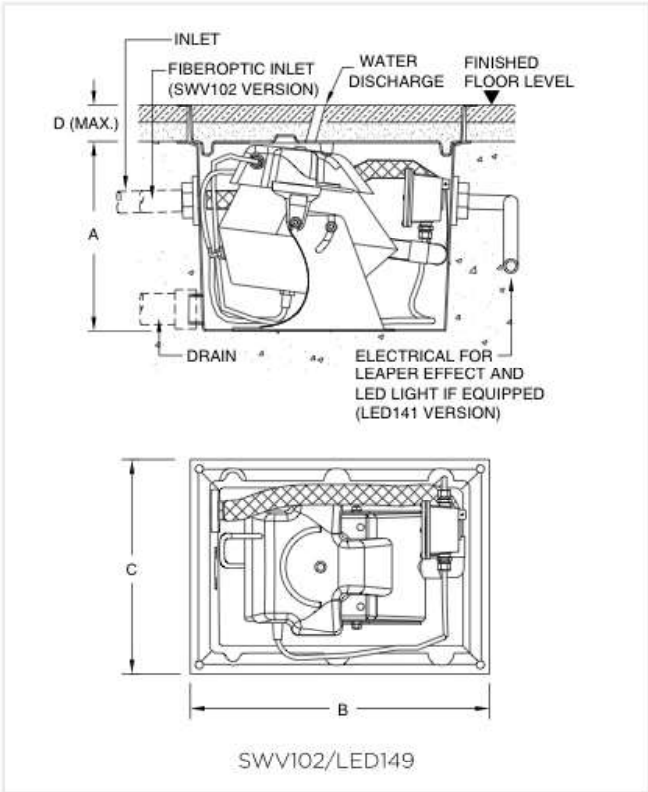
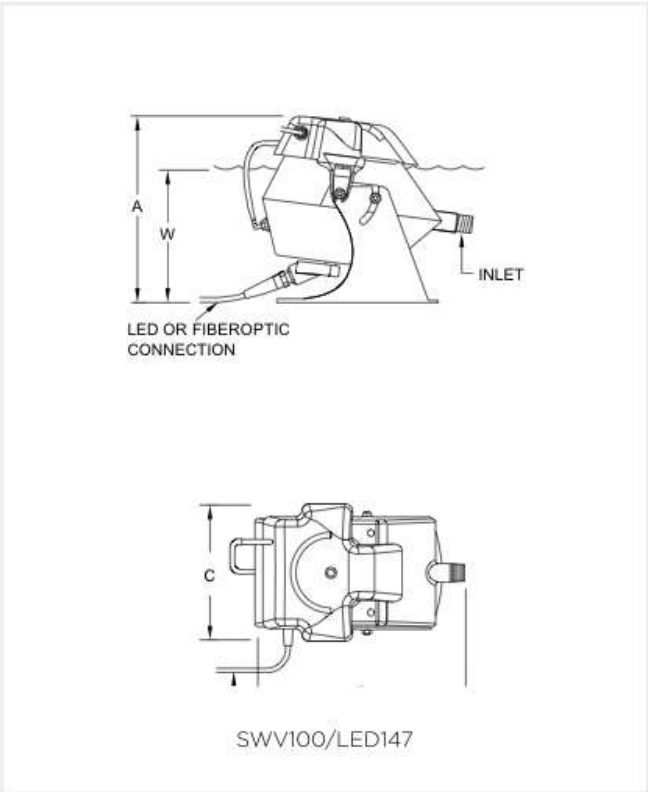
Miracle

www.miracleeng.com.hk

crystalfountains.com

Leaper Series

with Fiberoptic or RGBW LED Lighting



DIMENSIONS

Part No.	Inlet (b.s.p.t.)	a dim. (mm)	b dim. (mm)	c dim. (mm)	w dim. (mm)	Installation	Filtration Required
SWV100 / LED147	1"	343	356	242	216	Residential	50 micron max.
						Commercial	5 micron max.

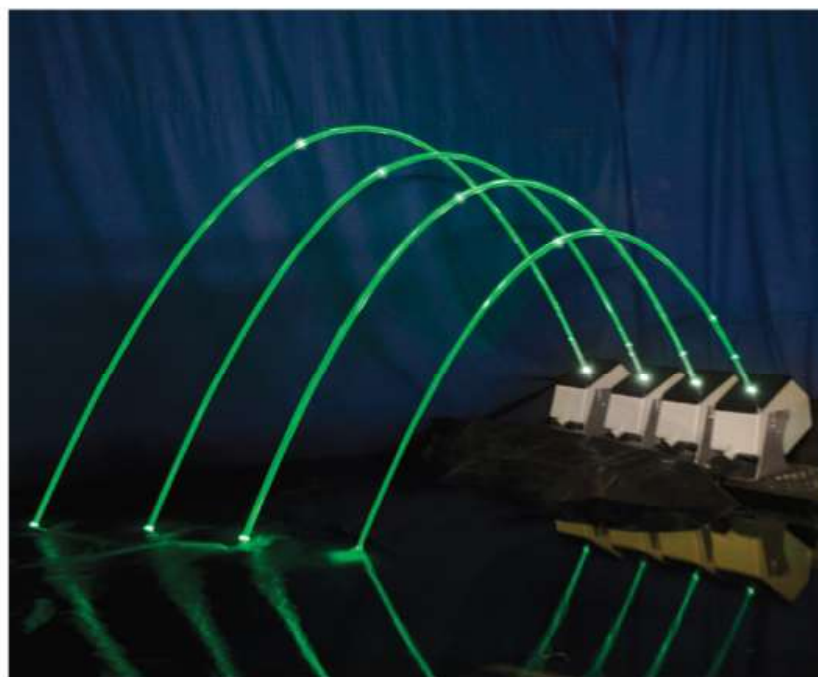
DIMENSIONS

Part No.	Inlet (b.s.p.t.)	Drain Connection (mm)	a dim. (mm)	b dim. (mm)	c dim. (mm)	d dim. (max) (mm)	Installation	Filtration Required
SWV102 / LED149	1"	51	420	578	432	77	Residential	50 micron max.
							Commercial	5 micron max.

Distributor:
Miracle
www.miracleeng.com.hk
crystalfountains.com

WMV Series

Starburst Laminar Fiberoptic or LED Lighting



Crystal's Starburst Laminar is a high-tech illusion. The water is so well controlled it creates a 13mm continuous glass-like rod of water that hits the water virtually sound and splash-free:

- » Comes with the Starburst Kit creating a traveling "Starburst" light that appears from opening to end of the water stream when connected to a fiberoptic or LED source
- » Fast programming and an unlimited color palette including white
- » Combined with the built-in light, produces breathtaking light shows

Versatile

- » Multiple Laminars can produce a wide variety of patterns
- » Produce multiple heights using a variable speed drive pump
- » Unit can be installed out of water or submerged to maximum water level shown
- » Can be flush-mounted in a deck with optional niche*

Easy Installation

- » Has up to 50° installation adjustment built in
- » 3 cable lengths to choose from (LED model only)

Programmable

- » Each RGBW LED stream can be individually programmed for unlimited lighting shows including pure white
- » Made of high density polyethylene, polycarbonate ABS with UV protection, 304/316 stainless steel and brass with 25mm male n.p.t.
- » LED light 12VDC
- » Available with an optional niche, lid and animation panel to control lighting
- » Water level independent**

**For interactive play, do not exceed 6 meters per second.*

***A filtered water supply is required (cartridge filter or 50 micron max.)*

Distributor:

Miracle

www.miracleeng.com.hk

crystalfountains.com

Contact Crystal for detailed specifications, installation and operation details.

WMV Series

Starburst Laminar Fiberoptic or LED Lighting

WHICH LAMINAR DO I NEED?

1 CHOOSE LIGHTING EFFECT

2 CHOOSE MOUNTING TYPE

3 CHOOSE PART NUMBER

4 CHOOSE CABLE

5 CHOOSE ADD. OPTIONS

No Light or Fiberoptic Lighting	RGBW LED Lighting																							
Free Standing Laminar	Niched Laminar	Free Standing Laminar																						
Niched Laminar		Niched Laminar																						
WMV107	WMV111	WMV127																						
		WMV129																						
<table> <tr> <th>CABLE</th> <th>LENGTH</th> <th>PART NO.</th> </tr> <tr> <td>WMV107/WMV111 (No Light)</td> <td>No cable required for no light version</td> <td>N/A</td> </tr> <tr> <td>WMV107/WMV111 (Fiberoptic)</td> <td>Purchase your own Fiberoptic Cable 100 Strand (per ft.)</td> <td>N/A</td> </tr> </table>	CABLE	LENGTH	PART NO.	WMV107/WMV111 (No Light)	No cable required for no light version	N/A	WMV107/WMV111 (Fiberoptic)	Purchase your own Fiberoptic Cable 100 Strand (per ft.)	N/A	<table> <tr> <th>CABLE</th> <th>LENGTH</th> <th>PART NUMBER</th> </tr> <tr> <td rowspan="3">WMV127</td> <td>3m</td> <td>ELCORD007M03</td> </tr> <tr> <td>6m</td> <td>ELCORD007M06</td> </tr> <tr> <td>18m</td> <td>ELCORD007M20</td> </tr> <tr> <td>WMV129</td> <td colspan="2">Power Cable and LED Cable included with Leaper</td> </tr> </table>		CABLE	LENGTH	PART NUMBER	WMV127	3m	ELCORD007M03	6m	ELCORD007M06	18m	ELCORD007M20	WMV129	Power Cable and LED Cable included with Leaper	
CABLE	LENGTH	PART NO.																						
WMV107/WMV111 (No Light)	No cable required for no light version	N/A																						
WMV107/WMV111 (Fiberoptic)	Purchase your own Fiberoptic Cable 100 Strand (per ft.)	N/A																						
CABLE	LENGTH	PART NUMBER																						
WMV127	3m	ELCORD007M03																						
	6m	ELCORD007M06																						
	18m	ELCORD007M20																						
WMV129	Power Cable and LED Cable included with Leaper																							
<table> <tr> <th>OPTIONS</th> <th>PART NUMBER</th> </tr> <tr> <td>Fiberoptic Illuminator (Fiberoptic version only)</td> <td>Purchase your own Fiberoptic Illuminator (250W Max)</td> </tr> </table>	OPTIONS	PART NUMBER	Fiberoptic Illuminator (Fiberoptic version only)	Purchase your own Fiberoptic Illuminator (250W Max)																				
OPTIONS	PART NUMBER																							
Fiberoptic Illuminator (Fiberoptic version only)	Purchase your own Fiberoptic Illuminator (250W Max)																							

VISIBILITY	● ● ● ● ●
SOUND LEVEL	● ● ● ● ●
WIND RESISTANCE	● ● ● ● ●
SPLASH/MIST	● ● ● ● ●
EFFICIENCY	● ● ● ● ●

Distributor:

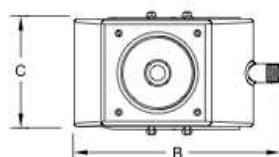
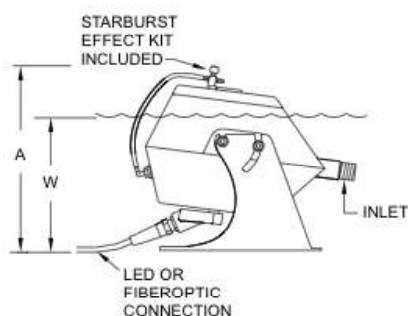
Miracle

www.miracleeng.com.hk

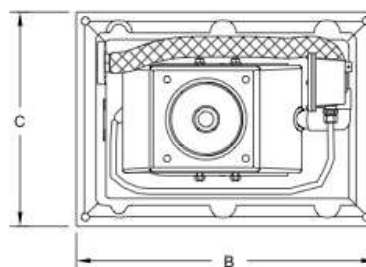
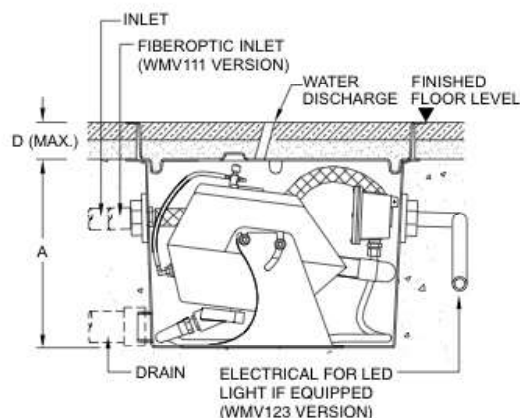
crystalfountains.com

WMV Series

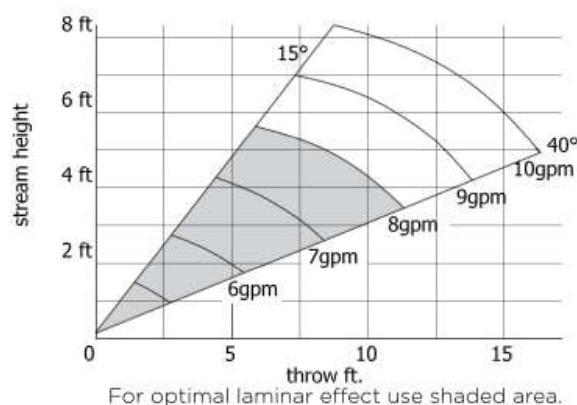
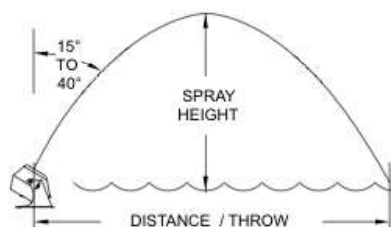
Starburst Laminar Fiberoptic or LED Lighting



WMV 107/127



WMV 111/129



DIMENSIONS

Part No.	Inlet (b.s.p.t.)	a dim. (mm)	b dim. (mm)	c dim. (mm)	w dim. (mm)	Installation	Filtration Required
WMV107 / WMV127	1"	280	356	204	216	Residential	50 micron max.
						Commercial	5 micron max.

DIMENSIONS

Part No.	Inlet (b.s.p.t.)	Drain Connection (mm)	a dim. (mm)	b dim. (mm)	c dim. (mm)	d dim. (max) (mm)	Installation	Filtration Required
WMV111 / WMV129	1"	51	420	578	432	77	Residential	50 micron max.
							Commercial	5 micron max.

Distributor:



www.miracleeng.com.hk
crystalfountains.com